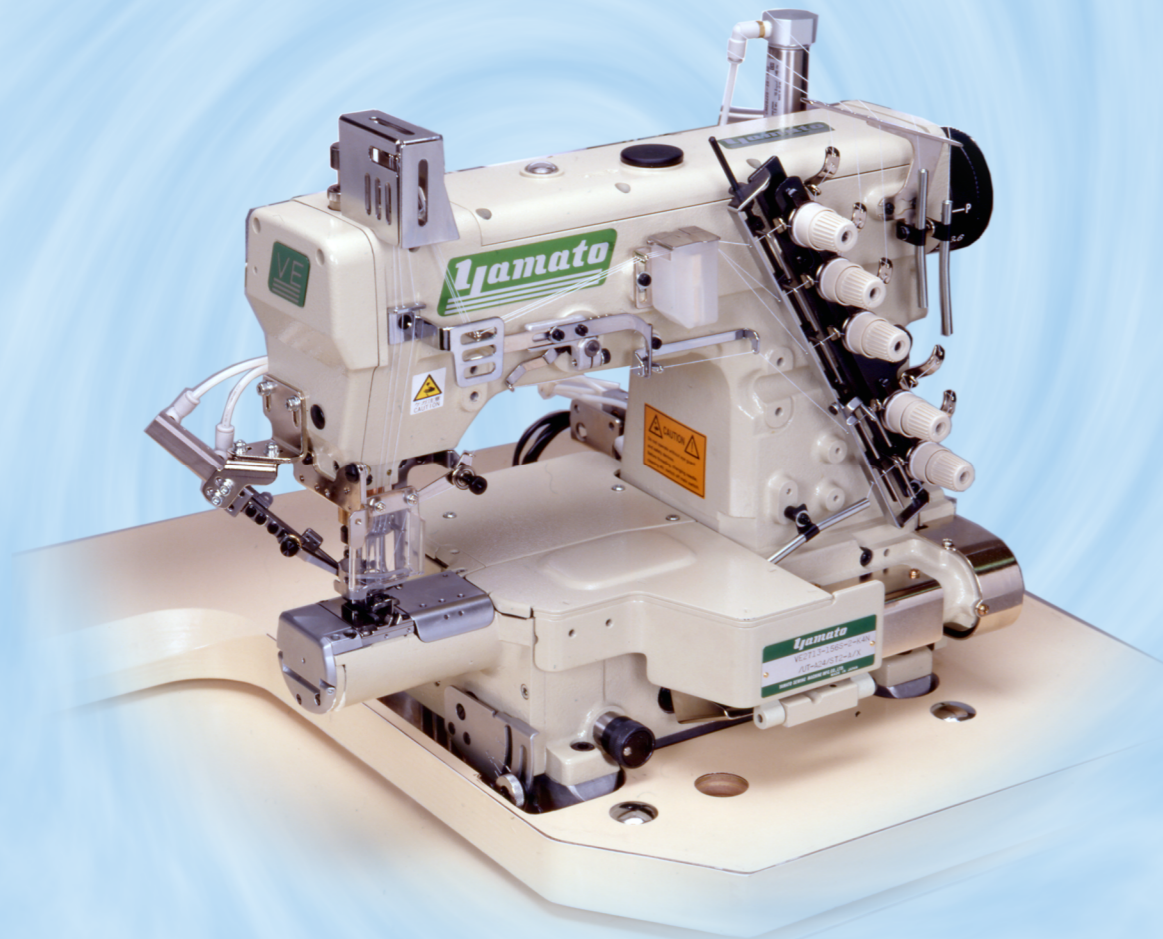


Yamato[®]

VE-8F series

Small Cylinder Bed Interlock Stitch Machine

Easy material handling and neat finish is available on YAMATO's small cylinderbed interlock stitch machines.



ISO9001:2008
JQA-QM6412

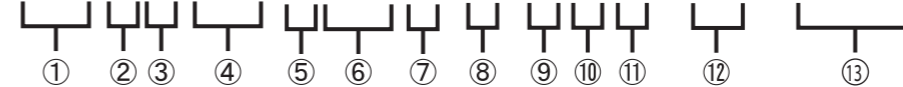
Yamato[®]

VE-8F series

Small Cylinder Bed Interlock Stitch Machine

Numbering on Model

VE2713-156L-2-T1N-8F/UT-2



- ① Symbol of Series
- ② Class No.
- ③ Number of Needle : 7= 2,3 needle
- ④ Submodel by Application
- ⑤ Top Cover Thread Mechanism :
1 = without the mechanism
0 = with the mechanism
- ⑥ Needle Distance :
48=4.8mm 56=5.6mm 64=6.4mm
- ⑦ Shape of Stitch Tongue on Stitch Plate:
M = for medium weight fabrics
L = for light weight fabrics
S = for special specifications
- ⑧ Special Features
-2 = Needle stroke: 33mm
-1 = Needle stroke: 31mm
- ⑨ Covering style
No indication=Fabric Guide: Non
-T = for covering
-K = for tip over covering

⑩ Feed Layout

No indication=Feed Layout: Non

Differential Feed Dog	Main Feed Dog
1 = 3 rows	4 rows
2 = 3 rows	3 rows
3 = 2 rows	4 rows
4 = 4 rows	4 rows

⑪ Coarseness of Feed Dogs

No indication (Standard)
N=1.6mm (Standard)
A=2.5mm (Coarse Mesh)

⑫ Active Thread Control

-8 = with Active Thread Control

⑬ Device

UT * = Automatic Under Thread Trimmer
ST * = Automatic Top Cover Thread Trimmer

Submodels & Specifications

Model	Seam	Needle	Presser Foot	Needle Distance (mm)	Stitch Width (mm)	Stitch Length (mm)	Stitch Density (st/in)	Stitch Density (st/cm)	Stitch Density (st/mm)	
VE2711(P)-8F		UY128GAS 3(2)	5 (4)	4.8 5.6 6.4	1.4-4.2		1:0.8 - 1:4	7	33 (31)	4500
VE2713(P)-8F		UY128GAS 3(2)	5 (4)	5.6	1.4 - 4.2			5	33 (31)	4500

Specification and appearance on this catalog are subject to change without notice. For correct handling of products described on this catalog, please read instructions carefully before operation.

YAMATO SEWING MACHINE MFG. CO., LTD.
<http://www.yamato-sewing.com>

HEAD OFFICE
4-12, 4-CHOME, NISHI-TENMA, KITA-KU, OSAKA, 530-0047, JAPAN
TEL:+81-6-6364-5621 / FAX:+81-6-6364-7185 / E-mail:export-dept@yamato-sewing.com

YAMATO U.S.A. INC. TEL:+1-803-548-0334/FAX:+1-803-548-0405
YAMATO EUROPE GmbH. TEL:+49-40-355347-0/FAX:+49-40-354371/E-mail:sales@yamato.de
YAMATO (HONG KONG) CO., LTD. TEL:+852-2721-0251/FAX:+852-2723-0444/E-mail:yamato@yamato-sewing.com.hk
雅满桃(香港)有限公司 东莞代表处 TEL:+86-769-86231363/FAX:+86-769-86231362
大和缝制机(宁波)有限公司 TEL:+86-574-86800518,86800558/FAX:+86-574-86800555/E-mail:marketing@yamato-china.com
大和缝制机制造株式会社 青岛事务所 TEL:+86-532-85783175/FAX:+86-532-85783172
大和缝制机制造株式会社 上海事务所 TEL:+86-21-64400017,64400019/FAX:+86-21-64400021
YAMATO SINGAPORE PTE LTD. TEL:+65-6287-1955/FAX:+65-6287-1028/E-mail:sales@yamato-sewing.com.sg
YAMATO SINGAPORE PTE LTD, INDIA LIAISON OFFICE, TIRUPUR MAIN BRANCH TEL:+91-421-4333701/FAX:+91-421-4333702/E-mail:yamato-sewing@airtelbroadband.in
YAMATO SINGAPORE PTE LTD, INDIA LIAISON OFFICE, DELHI BRANCH TEL:+91-11-41603280/FAX:+91-11-40574681
YAMATO SINGAPORE PTE LTD, CUSTOMER SERVICE CORRESPONDENT IN JAKARTA, INDONESIA FAX:+62-21-781-8727
YAMATO SINGAPORE PTE LTD., BANGLADESH LIAISON OFFICE TEL:+88-02-899-1864/FAX:+88-02-899-1865
YAMATO MEXICO OFFICE TEL:+52-55-5764-9090/FAX:+52-55-5578-1470
THE RESIDENT REPRESENTATIVE OFFICE OF YAMATO SEWING MACHINE MFG. CO., LTD IN HO CHI MINH CITY TEL: +84-8-62966057/FAX: +84-8-38113384

Circumference of cylinder is 180mm. Both main and differential feed dogs are installed in the small cylinder. Additionally, UT device is equipped.

CYLINDER

Short distance from needle drop point to front of cylinder.

Therefore, even if sewing cuffs of sweat shirts or children's cloths, it is easy for the operator to handle fabric.

Needle guard driving (front & rear) separately from looper holder

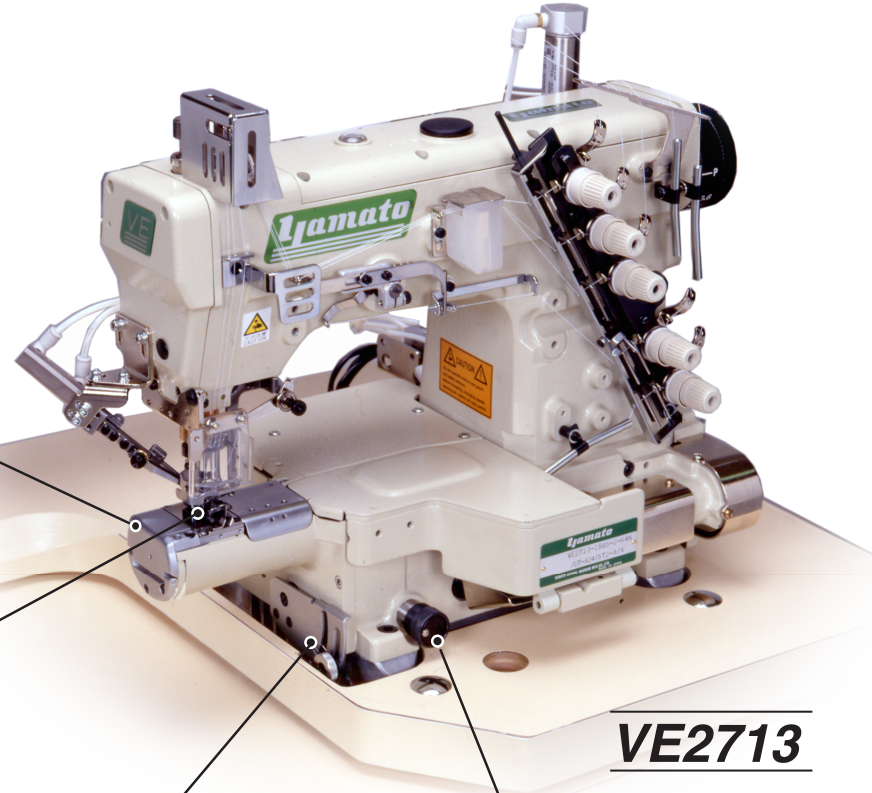
NEW NEEDLE GUARD MECHANISM (Patented)

Adjustable vertical position and angle

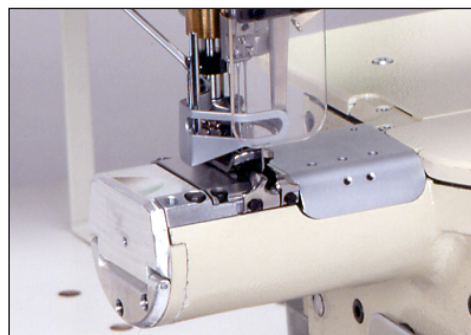
Stitch length can be quickly and easily adjusted by lever. Stitch condense can be obtained

Fine adjustable stitch length by adjusting knob.

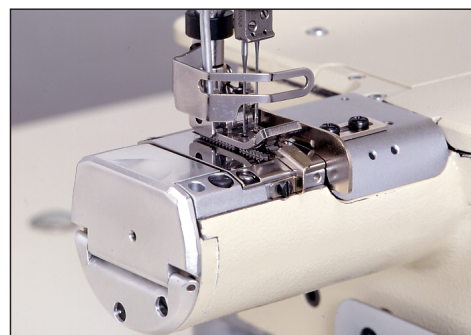
NEW FEED DRIVING MECHANISM (Patented)



VE2713



VE2713: FOR COVERING

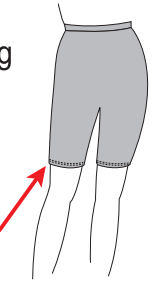


VE2711: FOR HEMMING

Submodels

VE2711 2, 3 Needle Small Cylinder Bed Interlock Stitch Machine for Hemming

This model is applicable for hemming on small tubular articles, such as cuffs of long sleeve shirts and ankles of pants.



VE2713(P) 3 Needle Small Cylinder Bed Interlock Stitch Machine for Covering

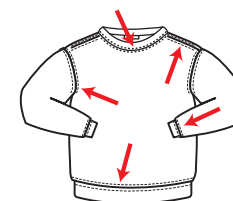
The small cylinder machine is applicable for covering on small circular articles, such as cuffs and neckline of sweatshirts, and ankles of sweat pants. Also, thanks to its short cylinder length, little obstruction is worried when covering armholes of raglan sleeve shirts.

VE2713 -1□□M-T1N-8F

Covering Style

Feed Layout

Coarseness of Feed Dogs



	T	K	Standard 1.6mm	Coarse Mesh 2.5mm
T1N	●		●	
T2A	●			●
K4N	●	●	●	

Devices

UT Automatic Under Thread Trimmer

ST Automatic Top Cover Thread Trimmer

	Under Thread Trimmer	Wiper	Foot Lifter	Foot Lifter + Wiper	Top Cover Thread Trimmer	Remarks
Air Operated Type						
UT-A32	●	—	—	●	—	Wiper and foot lifter works at the same time.
UT-A34	●	●	●	—	—	Wiper and foot lifter works independently
UT-A34/ST2-A	●	—	●	—	●	
Solenoido Type						
UT-2	●	●	●	—	—	
UT-4	●	—	●	—	—	
UT-4/ST2	●	—	●	—	●	

Active Thread Control

Active Thread Control support wide variety of seams from soft and elastic seams to tight seams.

